

Kambrook - Australia

Building 2, Port Air Industrial Estate

1A Hale Street

Botany NSW 2019

Australia

Customer Service Line 1300 139 798

Customer Service Fax 1800 621 337

www.kambrook.com.au

Kambrook - New Zealand

Private Bag 94411

Botany, Manukau

Auckland 2163

New Zealand

Customer Service Line/

Spare Parts 0800 273 845

Customer Service Fax 0800 288 513

www.kambrook.co.nz

KAMBROOK

THE SMARTER CHOICE



Ceramic
Tower Heater

KCE340

Instruction Booklet

Important

Please retain your instruction book for future use.

In the event that you need some assistance with your Kambrook appliance, please contact our Customer Service Department on 1300 139 798 (Australia) or 0800 273 845 (New Zealand). Alternatively, visit us on our website at www.kambrook.com.au or www.kambrook.co.nz

Contents

Kambrook Recommends Safety First	p4
Your Kambrook Ceramic Tower Heater	p7
Quick Start Guide	p8
Using your Kambrook Heater	p9
Care and Maintenance	p11

Kambrook Recommends Safety First

IMPORTANT: Please retain your instruction book for future use.

At Kambrook, we believe that safe performance is the first priority in any consumer product, so that you, our valued customer can confidently use and trust our products. We ask that any electrical appliance that you use be operated in a sensible fashion with due care and attention placed on the following important operating instructions.

Important Safeguards For Your Kambrook Ceramic Tower Heater

- Carefully read all instructions before operating the Tower Heater and save for future reference.
- Remove any packaging material and promotional stickers before using the heater for the first time.
- To eliminate a choking hazard for young children, remove and safely discard the protective cover fitted to the power plug of this heater.
- Connect only to a 230V or 240V power outlet.
- Avoid touching heater body while it is on, some parts of the heater are hot. When moving the unit switch OFF and hold the heater by the handles where provided.
- Keep combustible materials such as drapes and other furnishings at least 1.7 meters from the front, sides and rear of the heater.
- Extreme caution and supervision is necessary when this heater is used by or near children, invalids or animals.
- Children should be supervised to ensure that they do not play with the heater.
- Do not leave the heater unattended while in use. Always switch OFF the heater at the controls and at the power outlet, then unplug heater from the power outlet when not in use.
- Do not operate heater whilst asleep.
- Do not operate any heater with a damaged cord or plug, or if heater has been dropped or damaged in any manner. Return heater to your nearest Kambrook service centre for examination, electrical or mechanical adjustment or repair.
- Do not operate the heater with the power cord damaged, frayed or split, wound around any part of the heater, or in contact with heated surfaces of the heater.
- Do not run the cord under the carpeting or cover the cord with rugs, runners or the like. Arrange cord away from traffic areas and where it will not be tripped over.
- Do not locate the heater immediately below and in front of a socket outlet when in use.
- Do not use this heater with a programmer, timer or any other device that switches the heater on automatically since a fire risk may exist if the heater is covered or positioned incorrectly.
- This heater is not intended for use in wet or moist locations. Do not use this heater in the immediate surrounding of a bath, a shower or a swimming pool. Do not immerse or allow liquids to be spilt on heater.
- Do not use the heater to dry your laundry.
- This heater has hot and arcing or sparking parts inside. Do not use in areas where petrol, paints, aerosols, or other inflammable substances are used or stored.
- Do not allow materials that have been in contact with oil, petroleum based products or drying fluids to come in contact with the heater.
- To disconnect heater, switch the power On/Off switch to OFF, then switch off at the power outlet then remove plug from the outlet.
- Do not insert or allow foreign objects to pass through the inlet or outlet openings. This may cause an electric shock, fire or damage the heater.

- To prevent a possible fire or heat damage, allow ample space around the heater (at 1.7m at front and 0.5m at the rear, top and sides) and do not totally or partially block the air inlet or outlets in any manner. Check the openings from time to time for accumulated dust. Ensure long shag carpet does not obstruct airflow under the unit.
- Do not touch hot surfaces.
- Switch OFF at the main On/Off switch and the power outlet, then unplug and allow heater to cool down before cleaning or storing.
- Do not use outdoors. This heater is not intended for commercial use such as construction sites.
- Use this heater only as described in this instruction manual. Any other use not recommended by the manufacture may cause fire electric shock or injury and voids all warranties.
- Regularly inspect the supply cord, plug, control settings, air inlets and outlets and main housing for any damage. If found damaged in any way, immediately cease use of the heater and return to Kambrook or an authorized service agent for inspection or repair.
- Keep the heater clean. Follow the cleaning instructions provided in this book.
- Always ensure the heater is properly assembled before use. Follow the instructions provided in this book.
- Do not operate the heater on a sink or drain board.
- Do not operate the heater on an incline plane. Do not move while the heater is switched on.
- To avoid an electrical overload, it is recommended that no other appliances are plugged into the same circuit as your heater when it is in use.

NOTE: This Kambrook Ceramic Tower Heater is electronically controlled and will not operate until the heater is plugged into a 230V or 240V power point and switched on.

Important Safeguards For All Electrical Appliances

- Fully unwind the power cord before use.
- Connect only to a 230V or 240V power outlet.
- Do not let the power cord hang over the edge of a bench or table, touch hot surfaces or become knotted.
- To protect against electric shock, do not immerse the power cord, power plug or appliance in water or any other liquid or allow moisture to come in contact with the part, unless it is recommended in the cleaning instructions.
- The appliance is not intended for use by persons (including children) with reduced physical, sensory or mental capabilities, or lack of experience and knowledge, unless they have been given supervision or instruction concerning use of the appliance by a person responsible for their safety.
- Children should be supervised to ensure that they do not play with the appliance.
- It is recommended to regularly inspect the appliance. To avoid a hazard, do not use the appliance if power cord, power plug or appliance becomes damaged in any way. Return the entire appliance to the nearest authorized Kambrook Service Centre for examination and/or repair.
- Any maintenance other than cleaning should be performed at an authorised Kambrook Service Centre.
- This appliance is for household use only. Do not use this appliance for anything other than its intended use. Do not use in moving vehicles or boats. Do not use outdoors. **Misuse may cause injury.**
- The installation of a residual current device (safety switch) is recommended to provide additional safety protection when using electrical appliances. It is advisable that a safety switch with a rated residual operating current not exceeding 30mA be installed in the electrical circuit supplying the appliance. See your electrician for professional advice.
- Always turn the appliance to the 'OFF' position, switch off at the power outlet and unplug at the power outlet when the appliance is not in use.
- Before cleaning, always turn the appliance to the 'OFF' position, switch off at the power outlet, unplug at the power outlet and remove the power cord, if detachable, from the appliance and allow all parts to cool.
- Do not place this appliance on or near a heat source, such as hot plate, oven or heaters
- Position the appliance at a minimum distance of 20cm away from walls, curtains and other heat or steam sensitive materials and provide adequate space above and on all sides for air circulation.

Important Safeguards For All Electrical Appliances continued



WARNING: In order to avoid overheating, do not cover the heater.



WARNING: This heater is intended for floor use only. Do not mount on the ceiling or wall.



WARNING: Children should be supervised to ensure that they do not play with the heater.

Your Kambrook Ceramic Tower Heater

1. LCD screen
2. Control panel; featuring:
 - Power 'ON/OFF' button
 - Mode button (2 heat settings, auto and fan only setting)
 - Temperature buttons (+/-) to set variable temperature
 - Timer button (up to 8 hours)
 - Swing button to set oscillation

3. Remote control
4. Remote control signal receiver
5. 2000 watts ceramic heating elements
6. Oscillating platform
7. Main power 'ON/OFF' switch

Not Shown

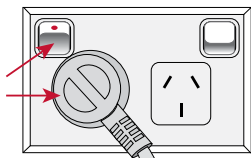
- Safety tip-over cut-out-switch
- ThermoGuard protection
- Carry handle (at rear of unit)



THERMO GUARD
PROTECTED

Quick Start Guide

Turning the heater on



Plug the cord into a 230V or 240V power point and switch on.



Switch the heater ON using the main power 'ON/OFF' switch located at the base of the heater.



Press the 'POWER' button to activate heating. The heater will be in HIGH heat mode (2000W) and the current room temperature will appear on the LCD screen.

Setting the heating mode



Pressing the 'MODE' button once will set the heater into AUTO mode. AUTO mode allows you to adjust the temperature settings to suit the desired temperature.



Pressing the 'MODE' button twice will set the heater into FAN mode, and the LCD screen will display the current room temperature. FAN mode is for fan-only operation with no output of heat.



Pressing the 'MODE' button three times will set the heater into LOW heat mode (1000W).

Setting the variable temperature



To use the variable temperature, press the 'MODE' button once to set the heater into AUTO mode.



Set the desired temperature by adjusting the 'TEMPERATURE' (+) to increase the temperature and (-) to decrease the temperature. The heater will now cut in and out to maintain desired set temperature.

Setting the oscillation



Pressing the 'SWING' button will allow the heater to oscillate side to side. To stop the oscillation, press the 'SWING' button again.

Using Your Kambrook Heater

Before First Use

Remove your heater from its carton and associated protective wrapping.

Unwind the cord to its full length and remove any protective cardboard or foam that may have been used to minimise transportation damage. Place the heater on a firm, level surface in a stable upright position.

Visually inspect the air inlet and outlets to ensure no foreign material is blocking these areas. The heater must always be operated with the rear air filter in position.

Turning Your Heater On

Plug the cord into a 230V or 240V electrical outlet. Be sure the plug fits tightly as a loose fit will cause overheating and damage the plug.

NOTE: To avoid an electrical circuit overload, it is recommended that no other appliances are plugged into the same circuit with your heater when you switch the unit on.

Turn the heater on by pressing the main power 'ON/OFF' switch, located at the base of the heater, to the 'ON' position; the heater will "beep" once and the LCD display screen will illuminate for at least 30 seconds indicating that the power is on and in standby mode.

To start the heater working, press the 'POWER' button once; the unit will be in HIGH heat mode (2000 watts). The LCD screen will display the current room temperature.

Pressing the 'MODE' button once will set the heater into the AUTO mode. AUTO mode allows the heater to maintain the desired set room temperature. In this setting, the heater will automatically cycle on and off to maintain temperature (see page 10 under Setting the Variable Temperature).

Pressing the 'MODE' button twice will set the heater into the FAN mode, and the LCD screen will only show the current room temperature.

NOTE: FAN mode is for fan-only operation with no output of heat.

Pressing the 'MODE' button three times will cause the heater to go into the LOW heat mode (1000W).

To turn the heater OFF, press the 'POWER' button once. Turn the main power 'ON/OFF' switch to the 'OFF' position and turn off at the power outlet and remove the plug from the power outlet.

NOTE: Once the 'POWER' button to turn the heater OFF is selected, the fan may continue to run for approximately 30 seconds to cool the heater. Always wait for the fan to stop cooling the heater before switching off the main power 'ON/OFF' switch located at the base of the heater, then turn the unit off at the power outlet.

Using Your Kambrook Heater continued

NOTE: There is a tip-over switch fitted to this heater. If the heater is tipped over, it will automatically turn off. The heater will need to be placed back into the upright position, the heater will be in standby mode and the settings will need to be selected again.

Setting the Oscillation

This function will work in any mode. Pressing the 'SWING' button will allow the heater to oscillate side to side. To stop the unit oscillating, press the 'SWING' button once more.

Setting the Auto-Off Timer

The timer function works in all operating modes and switches the unit off after a preset number of hours.

- Select the desired setting.
- Press the 'TIMER' button to activate the timer settings.
- Press the 'TIMER' button to cycle through in 0.5 hour increments, up to 8 hours.
- Once the TIMER is set to the desired set time, the TIMER will count down in 0.5 hour increments, showing on the LCD screen the remaining operating time. The heater will then switch itself to standby mode with no heat output after the selected number of hours has passed.

Setting the Variable Temperature

The variable temperature can be used to maintain your desired room temperature.

NOTE: The variable temperature only operates when the heater is set to AUTO mode.

1. Press the 'MODE' button until the heater is set to AUTO mode.
2. To adjust the temperature settings, press the 'TEMPERATURE' (+) button to increase and (-) to decrease the temperature. The desired temperature can be set between 15°C and 35°C.
3. When the air temperature reaches 2–3°C above the chosen set temperature, the heater will automatically cut out and the LCD screen turns OFF, however the fan may continue to run for approximately 15 seconds to cool the heater.
4. When the air temperature drops below the set temperature, to maintain set temperature the unit will begin heating again.

Using the Remote Control

The remote control buttons operate in the same way as those on the heater control panel. Your remote control requires 2 x "AAA" batteries and can be conveniently stored in the compartment on the rear housing of the heater (please note batteries are not included). Ensure the remote has uninterrupted line of sight to the remote control signal receiver.

Safety Tip-Over Cut-Out Switch

There is a tip-over switch fitted to the base of the heater, if the heater is accidentally tipped over the heater will stop operating. Once the heater is placed back into an upright Position the heater will be in standby mode and the settings will need to be selected again.

ThermoGuard Overheating Safety Device



Your heater is fitted with a safety device that switches off the heater in the event of overheating. Should this heater stop working, turn off the heater and inspect the air inlet and outlet for blockages. Wait until the unit is fully cooled for the protection system to rest before attempting to restart the heater.

If the heater fails to operate or the safety device switches off again. Return the heater to your nearest service centre for examination or repair.

Care and Maintenance

- Ensure that the main power 'ON/OFF' switch of the heater is switched OFF and the unit is disconnected from the power outlet before cleaning.
- Use a clean, dry cloth to clean the external surfaces of the heater. If the heater has collected dust or dirt inside the unit or around the elements, have the unit cleaned by a qualified service agent. Do not operate the heater in this condition.
- Do not attempt to open the case of the heater at any time as there are no customer serviceable parts inside. When not in use, store the heater (preferably in its original box) in a cool, clean and dry location.
- It is then necessary to separate the mesh from the filter cover. Once separated, shake both the filter cover and the mesh filter into a rubbish receptacle until all fine dust particles and debris are removed. Wipe over with a soft, dry cloth if required to remove particles.
- To replace, reinsert the mesh filter to the filter cover, align the two tabs at the back of the filter cover with the two holes at the back of the heater and then press down on the cover until it "clicks".

Hints & Tips to Retain Heat in Your Home

Cleaning the Filter

- Your Kambrook Ceramic Tower Heater comes with a mesh filter located at the rear of the heater to help keep dust and debris away from the working parts. It is recommended to regularly check your heaters filter for clogging and dust build up. The filter should be checked after every use to ensure efficient heating performance.
- Always switch the main 'ON/OFF' switch of the heater to OFF, then disconnect from the power outlet prior to removing the filter for cleaning.
- To access the filter, ensure the heater is in the upright position and then remove the filter cover by pulling down on the two release levers at the top of the cover and then carefully pull out the cover until it is completely free from the heater.
- Don't overheat your home. The temperature of a heated room in winter should be 18-21°C.
- Your heater will work more efficiently if you stick to Kambrook's recommended clearance spaces.
- Choose the right size heater for the room type you want to heat.
- Zone off unoccupied rooms by closing doors and only heat the main living areas. Fit window coverings like curtains to halve winter heat loss.
- Put draft stoppers, such as a rolled up towel, at the bottom of outside doorways to keep out cold air.
- Keep the heat in and the cold out by installing wall and ceiling insulation.
- Avoid placing items too close to the heater (both at the front and back) for optimal air flow.

Notes
